

# INJURY-RELATED MORTALITY BY SEX

## Data sources:

Public Health Ontario. Snapshots: North Bay Parry Sound District Health Unit, Sparsely Populated Urban-Rural Mix Peer Group, Ontario: Mortality for all injuries- age standardized rate 2003-2011. Toronto, ON: Ontario Agency for Health Protection and Promotion; 2014 Nov 5 [cited 2015 Mar 12].

Available from:

<http://www.publichealthontario.ca/en/DataAnalytics/Snapshots/Pages/Injury-Mortality.aspx>

## Interpretation of a significant difference:

A statistic interpreted as 'significantly different' from another is an estimate found to be statistically meaningful, in such a way that the difference between two estimates is unlikely due to chance and represents a real difference. Error bars noted in figures within this report illustrate 95% confidence intervals. If there is no overlap in range, the difference can be described as statistically significant.

## Injury-related mortality:

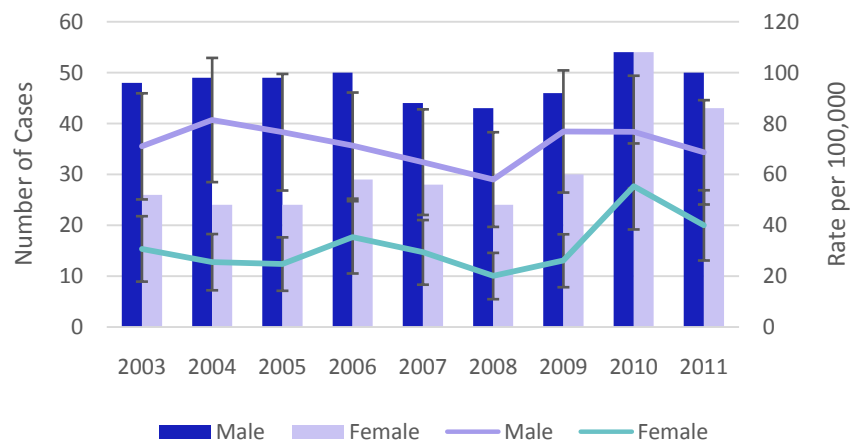
Injury recorded as the primary cause of death.

## All Injuries

The age-standardized rate for injury-related mortalities in NBPSDHU for both males and females did not change from 2003-2011. The age-standardized rate for males was significantly higher than that of females in 2003-2009, but was not different in 2010 or 2011. (Figure 1, Table 1).

Compared to Ontario, the age-standardized rate of injury-related mortalities in males in the NBPSDHU region was significantly higher in 2003-2006, and 2009-2011, and not significantly different in 2007-2008 (Figure 2, Table 2). The age-standardized rate of injury-related mortalities in females in the NBPSDHU was significantly higher than Ontario in 2010-2011, but did not differ in 2003-2009 (Figure 3, Table 2).

**Figure 1. Number of cases and age-standardized rate (per 100,000 population) of all injury-related mortalities in NBPSDHU, for males and females, 2003-2011.**

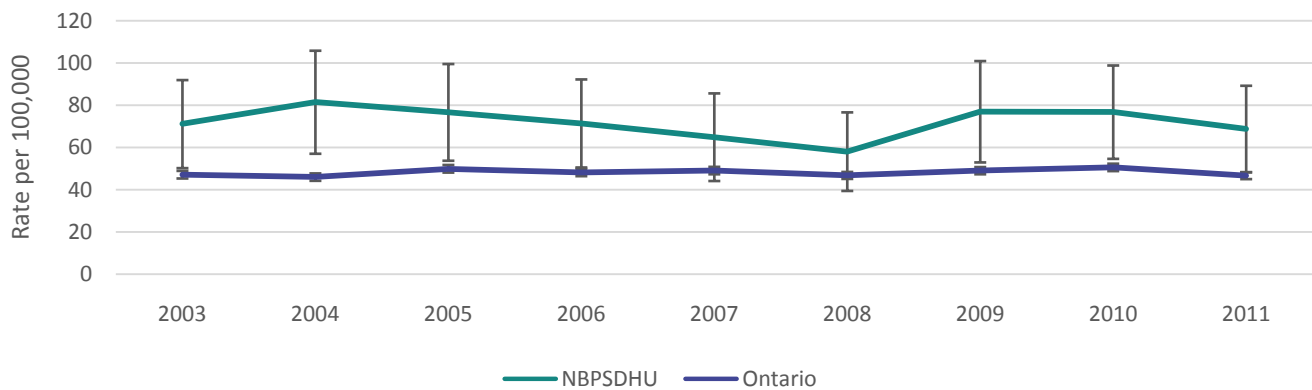


# INJURY-RELATED MORTALITY BY SEX

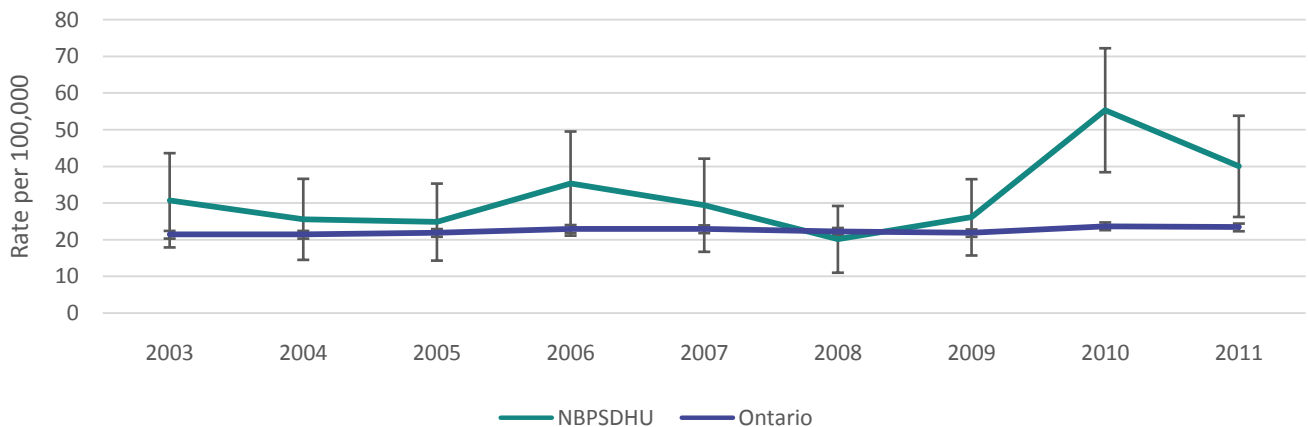
**Table 1. Number of cases and age-standardized rate (per 100,000 population) of all injury-related mortalities in NBPSDHU, for males and females, 2003-2011.**

Year	Males		Females	
	Cases	Rate	Cases	Rate
2003	48	71.1	26	30.7
2004	49	81.4	24	25.5
2005	49	76.6	24	24.8
2006	50	71.3	29	35.3
2007	44	64.8	28	29.4
2008	43	58.0	24	20.1
2009	46	76.9	30	26.1
2010	54	76.7	54	55.3
2011	50	68.7	43	40.0

**Figure 2. Age-standardized rate (per 100,000 population) of all injury-related mortalities in NBPSDHU and Ontario, for males, 2003-2011.**



**Figure 3. Age-standardized rate (per 100,000 population) of all injury-related mortalities in NBPSDHU and Ontario, for females, 2003-2011.**



# INJURY-RELATED MORTALITY BY SEX

**Table 2. Age-standardized rate (per 100,000 population) of all injury-related mortalities in NBPSDHU and Ontario, for males and females, 2003-2011.**

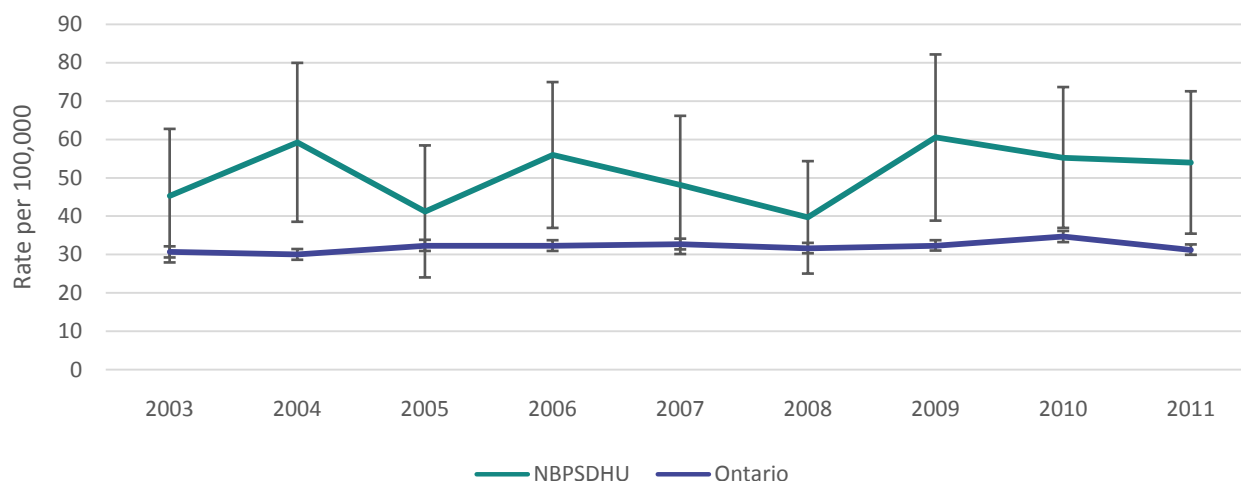
Year	Males		Females	
	NBPSDHU	Ontario	NBPSDHU	Ontario
2003	71.1	47.1	30.7	21.4
2004	81.4	46.0	25.5	21.4
2005	76.6	49.9	24.8	21.8
2006	71.3	48.2	35.3	22.9
2007	64.8	49.1	29.4	22.9
2008	58.0	46.7	20.1	22.2
2009	76.9	49.0	26.1	21.8
2010	76.7	50.6	55.3	23.6
2011	68.7	46.6	40.0	23.4

## Unintentional Injuries

The age-standardized rate of unintentional injury-related mortalities in males the NBPSDHU region was significantly higher than the rates for Ontario in 2004, 2006, and 2009-2011 (Figure 4, Table 3). The rate of unintentional injury-related mortalities in males in the NBPSDHU region and Ontario did not significantly change from 2003-2011. The rate of unintentional injury-related mortalities for females in the NBPSDHU region was significantly higher than Ontario in 2010-2011, but was not significantly different in 2003-2009 (Figure 5, Table 3). The rate of unintentional injury-related mortalities in females in the NBPSDHU region and Ontario did not significantly change from 2003-2011.

The highest rates of unintentional mortality for males in the NBPSDHU region in 2011 were due to land transport and motor vehicle collisions and unintentional poisoning (Table 4). For females, the highest rates of unintentional injury-related mortality in the NBPSDHU region in 2011 were due to falls and unintentional poisoning (Table 4). There were no significant differences in the rates of mortality by type of injury between males and females in the NBPSDHU region in 2011.

**Figure 4. Age-standardized rate (per 100,000 population) of unintentional injury-related mortalities for males, NBPSDHU and Ontario, 2003-2011.**



# INJURY-RELATED MORTALITY BY SEX

Figure 5. Age-standardized rate (per 100,000 population) of unintentional injury-related mortalities for females, NBPSDHU and Ontario, 2003-2011.

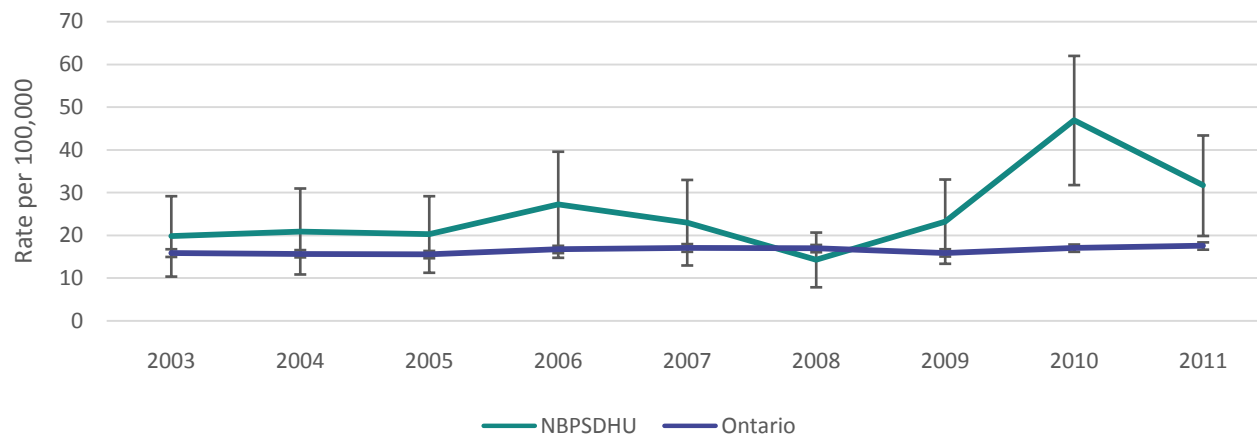


Table 3. Age-standardized rate (per 100,000 population) of unintentional injury-related mortalities for NBPSDHU and Ontario, for males and females, 2003-2011.

Year	Males		Females	
	NBPSDHU	Ontario	NBPSDHU	Ontario
2003	45.3	30.7	19.8	15.9
2004	59.2	30.0	20.9	15.7
2005	41.2	32.3	20.3	15.6
2006	55.9	32.3	27.2	16.8
2007	48.1	32.7	23.0	17.1
2008	39.7	31.6	14.3	17.0
2009	60.5	32.3	23.2	15.9
2010	55.2	34.7	46.9	17.1
2011	53.9	31.2	31.7	17.6

Table 4. Age-standardized rate (per 100,000 population) of unintentional injury-related mortalities by type of injury for NBPSDHU, for males and females, 2011.

Type of injury	Males	Females
Falls	12.6	17.5
Land transport collisions	16.7	4.1
Motor vehicle collisions	16.7	4.1
Drowning or submersion	3.7	4.4
Suffocation	1.0	0.0
Unintentional poisoning	13.5	5.0

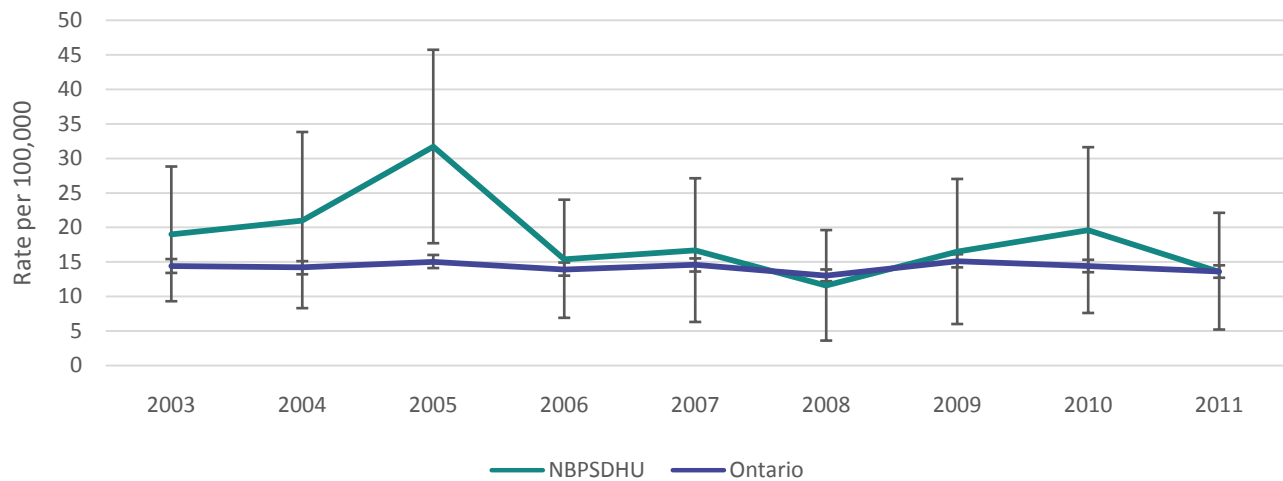
# INJURY-RELATED MORTALITY BY SEX

## Intentional Injuries

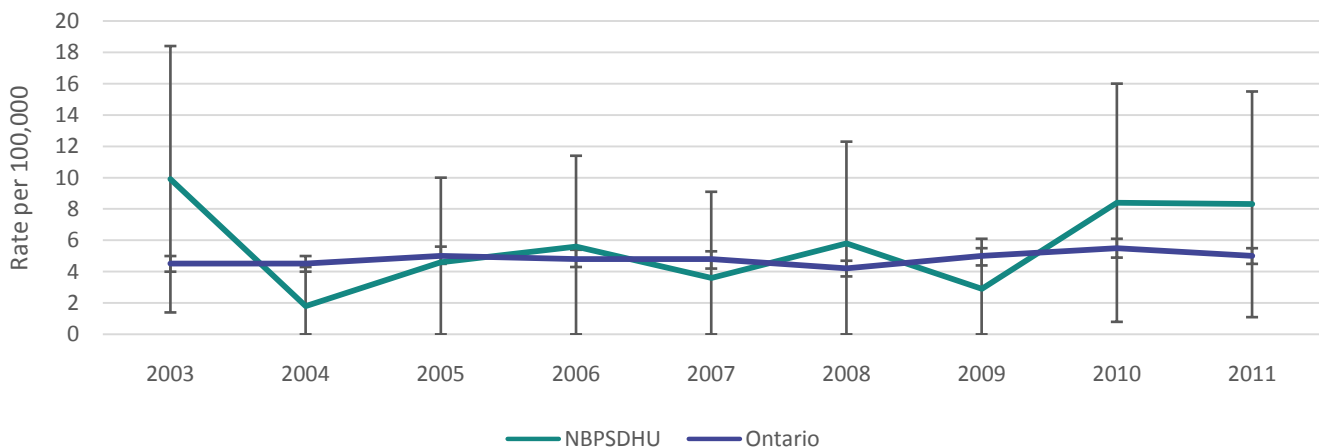
The age standardized rate of intentional injury-related mortalities in males in the NBPSDHU region was significantly higher than Ontario in 2005, but did not differ from the rate in Ontario in 2003-2004 and 2006-2011 (Figure 6; Table 5). The rate of intentional injury-related mortalities for males in 2011 in both the NBPSDHU region and Ontario did not differ from the rate in 2003 (Figure 6, Table 5). The age standardized rate of intentional injury-related mortalities in females in the NBPSDHU region was significantly lower than Ontario in 2004, but did not differ from the rate in Ontario in 2003 and 2005-2011 (Figure 7; Table 5). The rate of intentional injury-related mortalities for females in 2011 in both the NBPSDHU region and Ontario did not differ from the rate in 2003 (Figure 7, Table 5).

A significantly higher rate of injury-related mortalities in both males and females the NBPSDHU region in 2011 were due to intentional self-harm, as opposed to assault (Table 6) . There was no significant difference by sex for the rate of mortality by type of intentional injury in the NBPSDHU region in 2011.

**Figure 6. Age-standardized rate (per 100,000 population) of intentional injury-related mortalities for males, NBPSDHU and Ontario, 2003-2011.**



**Figure 7. Age-standardized rate (per 100,000 population) of intentional injury-related mortalities for females, NBPSDHU and Ontario, 2003-2011.**



# INJURY-RELATED MORTALITY BY SEX

**Table 5. Age-standardized rate (per 100,000 population) of intentional injury-related mortalities for NBPSDHU and Ontario, for males and females, 2003-2011.**

Year	Males		Females	
	NBPSDHU	Ontario	NBPSDHU	Ontario
2003	19.0	14.4	9.9	4.5
2004	21.0	14.2	1.8	4.5
2005	31.7	15.0	4.6	5.0
2006	15.4	13.9	5.6	4.8
2007	16.7	14.6	3.6	4.8
2008	11.6	13.0	5.8	4.2
2009	16.5	15.1	2.9	5.0
2010	19.6	14.4	8.4	5.5
2011	13.6	13.6	8.3	5.0

**Table 6. Age-standardized rate (per 100,000 population) of intentional injury-related mortalities by type of injury for NBPSDHU, for males and females, 2011.**

Type of injury	Males	Females
Assault	0.0	0.0
Intentional self-harm	15.8	9.7