

INJURY-RELATED EMERGENCY DEPARTMENT VISITS

Data sources:

Public Health Ontario. Snapshots: North Bay Parry Sound District Health Unit, Sparsely Populated Urban-Rural Mix Peer Group, Ontario: Emergency department visits for all injuries- age standardized rate (both sexes combined) 2003-2013. Toronto, ON: Ontario Agency for Health Protection and Promotion; 2014 Nov 5 [cited 2015 Mar 12].

Available from:

<http://www.publichealthontario.ca/en/DataAnalytics/Snapshots/Pages/Injury-ED-Visits.aspx>

Interpretation of a significant difference:

A statistic interpreted as 'significantly different' from another is an estimate found to be statistically meaningful, in such a way that the difference between two estimates is unlikely due to chance and represents a real difference. Error bars noted in figures within this report illustrate 95% confidence intervals. If there is no overlap in range, the difference can be described as statistically significant.

Emergency department (ED) visit:

An ED visit occurs when a person presents at the emergency department, or a hospital-based urgent care centre, either by their own means or by ambulance, and without a prior scheduled appointment.

All Injuries

In the North Bay Parry Sound District Health Unit (NBPSDHU) region, there was an average of 20,131 (range: 18899-21410) injury-related emergency department (ED) visits per year between 2003 and 2013. The age-standardized rate of all injury-related ED visits in NBPSDHU was significantly lower in 2013 as compared to 2003. The age-standardized rate of injury-related ED visits in NBPSDHU was significantly higher than both Ontario and the sparsely populated urban-rural peer group (Figure 1, Table 1).

Figure 1. Age-standardized rate (per 100,000 population) of all injury-related ED visits for NBPSDHU, Sparsely Populated Urban-Rural Mix Peer Group, and Ontario, 2003-2013.

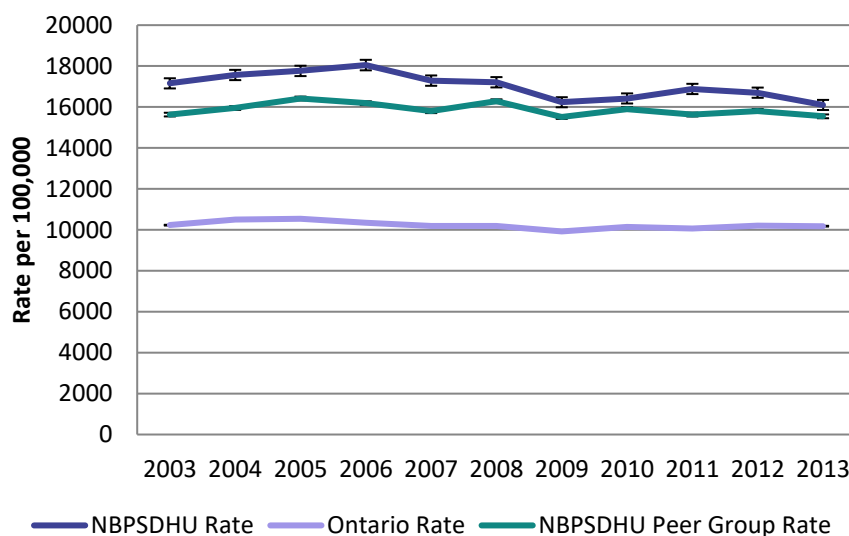


Table 1. Age-standardized rate (per 100,000 population) of all injury-related ED visits for NBPSDHU, Sparsely Populated Urban-Rural Mix Peer Group, and Ontario, 2003-2013.

Year	NBPSDHU	NBPSDHU Peer Group	Ontario
2003	17156.4	15629.9	10229.1
2004	17565.6	15950.7	10496.1
2005	17764.3	16415.5	10540.0
2006	18049.3	16186.9	10350.9
2007	17290.2	15795.0	10184.1
2008	17209.6	16282.2	10193.9
2009	16233.5	15513.8	9922.8
2010	16419.4	15897.9	10147.9
2011	16882.3	15633.3	10059.2
2012	16700.5	15808.3	10207.8
2013	16101.4	15544.9	10178.0

INJURY-RELATED EMERGENCY DEPARTMENT VISITS

Unintentional Injuries

The age-standardized rate of unintentional injury-related ED visits in the NBPSDU region was significantly higher than the rates for both the sparsely populated urban-rural mix peer group and Ontario from 2003 to 2013 (Figure 2; Table 2). The rate of unintentional injury-related ED visits in the NBPSDHU region was significantly lower in 2013 as compared to 2003, while the rate for Ontario significantly increased and the rate for the peer group did not change.

Age standardized rates of unintentional injury-related ED visits in 2013 in the NBPSDHU were highest for falls, struck by or against, and overexertion (Table 3). Rates for injury-related ED visits in NBPSDHU region in 2013 were significantly higher than Ontario for all unintentional injury types, except near-drowning or submersion and suffocation. Rates of injury-related ED visits in NBPSDHU in 2013 for bite by dog or other mammal, struck by or against, and falls were significantly higher as compared to the peer group.

Figure 2. Age-standardized rate (per 100,000 population) of unintentional injury-related ED visits for NBPSDHU, Sparsely Populated Urban-Rural Mix Peer Group, and Ontario, 2003-2013.

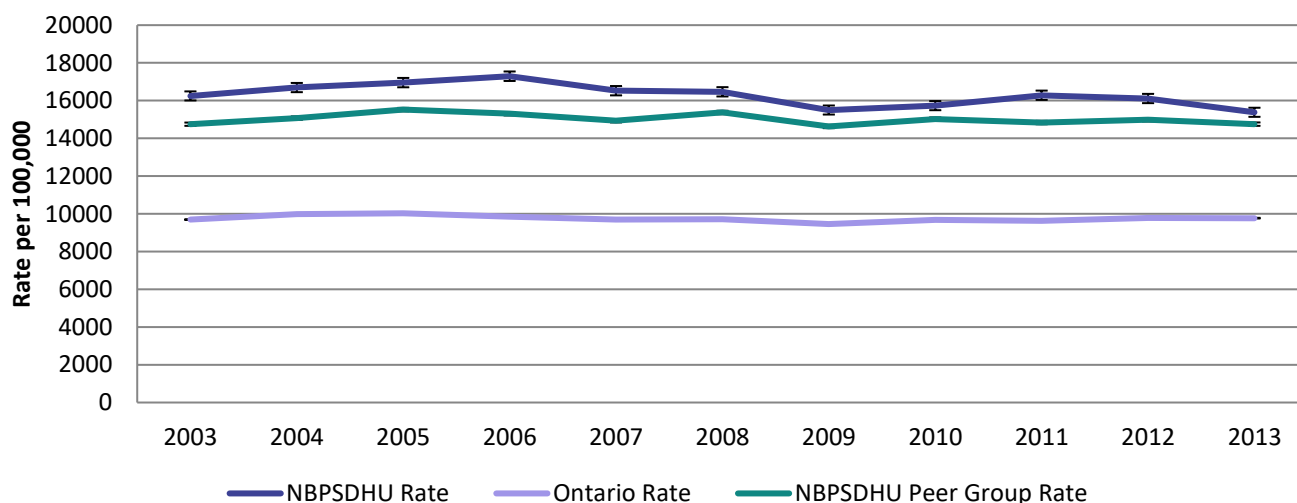


Table 2. Age-standardized rate (per 100,000 population) of unintentional injury-related ED visits for NBPSDHU, Sparsely Populated Urban-Rural Mix Peer Group, and Ontario, 2003-2013.

Year	NBPSDHU	NBPSDHU Peer Group	Ontario
2003	16248.9	14750.3	9695.1
2004	16693.1	15074.3	9980.3
2005	16954.9	15524.8	10028.5
2006	17293.4	15305.4	9844.5
2007	16526.3	14935.1	9704.5
2008	16467.7	15370.9	9714.5
2009	15502.0	14630.1	9457.6
2010	15734.4	15017.8	9686.5
2011	16284.9	14839.1	9626.3
2012	16112.6	14989.2	9776.3
2013	15381.6	14753.9	9770.6

INJURY-RELATED EMERGENCY DEPARTMENT VISITS

Table 3. Age-standardized rate (per 100,000 population) of unintentional injury-related ED visits by type of injury for NBPSDHU, Sparsely Populated Urban-Rural Mix Peer Group, and Ontario, 2013.

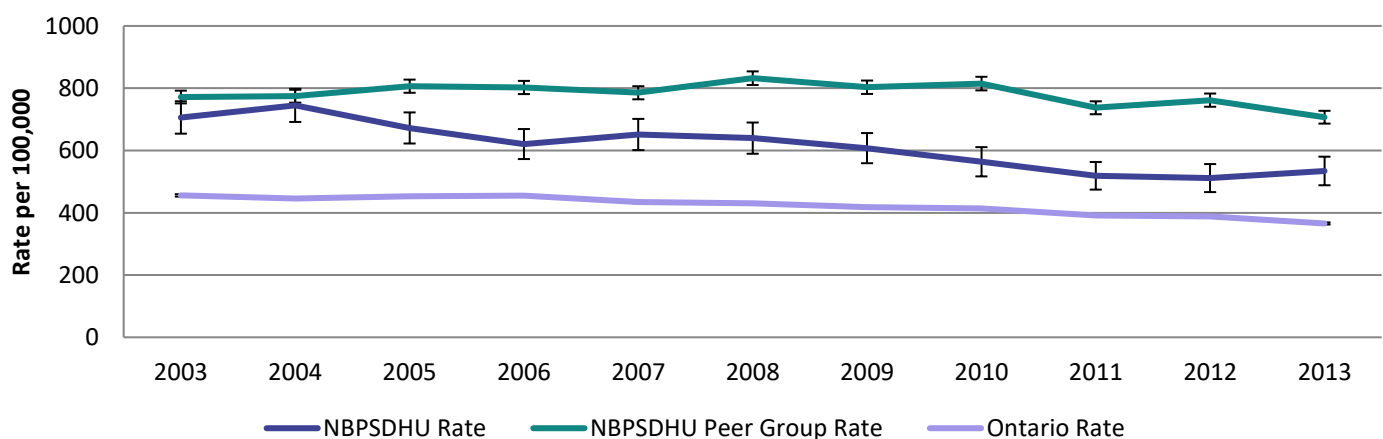
Type of injury	NBPSDHU	NBPSDHU Peer Group	Ontario
Bite by dog or other mammal	360.8	306.9	181.5
Caught or crushed between objects	425.6	403.8	232.5
Cut or pierced by an object	1310.3	1349.2	814.4
Struck by or against an object	2521.2	2324.0	1633.6
Exposure to smoke or fire or contact with heat or hot substances	247.6	223.6	129.7
Falls	4232.1	3959.2	2927.5
Foreign body in an eye or orifice	759.2	704.9	428.7
All land transport collisions	1206.3	1193.8	791.9
Motor vehicle collisions	913.7	936.1	600.6
Near-drowning or submersion	7.4	4.7	3.9
Overexertion	1358.9	1419.6	907.2
Suffocation	12.6	11.2	6.8
Unintentional poisoning	250.4	262.3	157.4

Intentional Injuries

The age standardized rate of intentional injury-related ED visits in the NBPSDHU region was significantly higher than the rate in Ontario, but lower than the rate for the sparsely populated urban-rural mix peer group in 2003 to 2013 (Figure 3; Table 4). The intentional injury-related ED visit rate in 2013 in the NBPSDHU region and Ontario was significantly lower than the rate in 2003; the rate in the peer group was similar in 2003 and 2013.

In the NBPSDHU region the rate of ED visits in 2013 was significantly higher for assault than intentional self-harm. The rate of ED visits for assault in 2013 was significantly higher in the NBPSDHU region as compared to Ontario, but significantly lower than the peer group. The rate of ED visits for intentional self-harm in the NBPSDHU region was similar to that of the peer group, but significantly higher than Ontario (Table 5).

Figure 3. Age-standardized rate (per 100,000 population) of intentional injury-related ED visits for NBPSDHU, Sparsely Populated Urban-Rural Mix Peer Group, and Ontario, 2003-2013.



INJURY-RELATED EMERGENCY DEPARTMENT VISITS

Table 4. Age-standardized rate (per 100,000 population) of intentional injury-related ED visits for NBPSDHU, Sparsely Populated Urban-Rural Mix Peer Group, and Ontario, 2003-2013.

Year	NBPSDHU	NBPSDHU Peer Group	Ontario
2003	706.0	771.7	455.8
2004	744.9	774.3	446.1
2005	672.7	806.4	452.7
2006	620.7	802.3	454.8
2007	651.3	785.4	434.2
2008	639.6	832.3	430.4
2009	607.5	803.1	418.1
2010	563.8	814.8	413.9
2011	518.7	737.1	391.1
2012	511.4	761.7	388.1
2013	534.2	706.8	365.6

Table 5. Age-standardized rate (per 100,000 population) of intentional injury-related ED visits by type of injury for NBPSDHU, Sparsely Populated Urban-Rural Mix Peer Group, and Ontario, 2013.

Type of injury	NBPSDHU	NBPSDHU Peer Group	Ontario
Assault	340.2	498.7	251.2
Intentional self-harm	225.2	240.9	132.5