

INJURY-RELATED MORTALITY

Data sources:

Public Health Ontario. Snapshots: North Bay Parry Sound District Health Unit, Sparsely Populated Urban-Rural Mix Peer Group, Ontario: Mortality for all injuries- age standardized rate (both sexes combined) 2003-2011. Toronto, ON:

Ontario Agency for Health Protection and Promotion; 2014 Nov 5 [cited 2015 Mar 12].

Available from:

<http://www.publichealthontario.ca/en/DataAnalytics/Snapshots/Pages/Injury-Mortality.aspx>

Interpretation of a significant difference:

A statistic interpreted as 'significantly different' from another is an estimate found to be statistically meaningful, in such a way that the difference between two estimates is unlikely due to chance and represents a real difference. Error bars noted in figures within this report illustrate 95% confidence intervals. If there is no overlap in range, the difference can be described as statistically significant.

Injury-related mortality:

Injury recorded as the primary cause of death.

All Injuries

In the North Bay Parry Sound District Health Unit (NBPSDHU) region, there was an average of 79 (range: 67-108) injury-related mortalities per year between 2003 and 2011. The age-standardized rate of all injury-related mortalities in NBPSDHU did not change significantly from 2003-2011. The age-standardized rate of injury-related mortalities in NBPSDHU was significantly higher than Ontario in 2003-2006 and 2009-2011, and was not significantly different from the rate in the sparsely populated urban-rural peer group from 2003-2011 (Figure 1, Table 1).

Figure 1. Age-standardized rate (per 100,000 population) of all injury-related mortalities for NBPSDHU, Sparsely Populated Urban-Rural Mix Peer Group, and Ontario, 2003-2011.

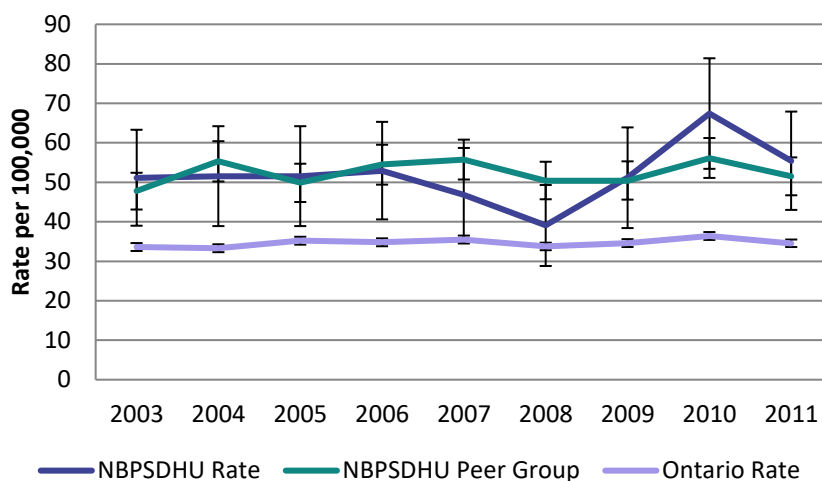


Table 1. Age-standardized rate (per 100,000 population) of all injury-related mortalities for NBPSDHU, Sparsely Populated Urban-Rural Mix Peer Group, and Ontario, 2003-2011.

Year	NBPSDHU	NBPSDHU Peer Group	Ontario
2003	51.1	47.8	33.6
2004	51.5	55.3	33.3
2005	51.5	49.9	35.2
2006	52.9	54.5	34.8
2007	46.8	55.7	35.5
2008	39.1	50.4	33.8
2009	51.2	50.4	34.6
2010	67.4	56.1	36.4
2011	55.4	51.5	34.5

INJURY-RELATED MORTALITY

Unintentional Injuries

The age-standardized rate of unintentional injury-related mortalities in the NBPSDHU region was significantly higher than the rates for Ontario in 2004, 2006, and 2009-2011. The rate for the NBPSDHU region did not vary from the rate for the sparsely populated urban-rural mix peer group 2003 to 2011 (Figure 2; Table 2). The rate of unintentional injury-related mortalities in the NBPSDHU region did not significantly change from 2003-2011, nor did it change for Ontario or the peer group.

Age-standardized rates of unintentional injury-related mortalities in 2011 in the NBPSDHU region were highest for falls, land transport collisions, and motor vehicle collisions (Table 3). Rates for injury-related mortalities in NBPSDHU region in 2011 were significantly higher than Ontario for falls and drowning or submersion. NBPSDHU rates for all unintentional injury types did not differ from the peer group in 2011.

Figure 2. Age-standardized rate (per 100,000 population) of unintentional injury-related mortalities for NBPSDHU, Sparsely Populated Urban-Rural Mix Peer Group, and Ontario, 2003-2011.

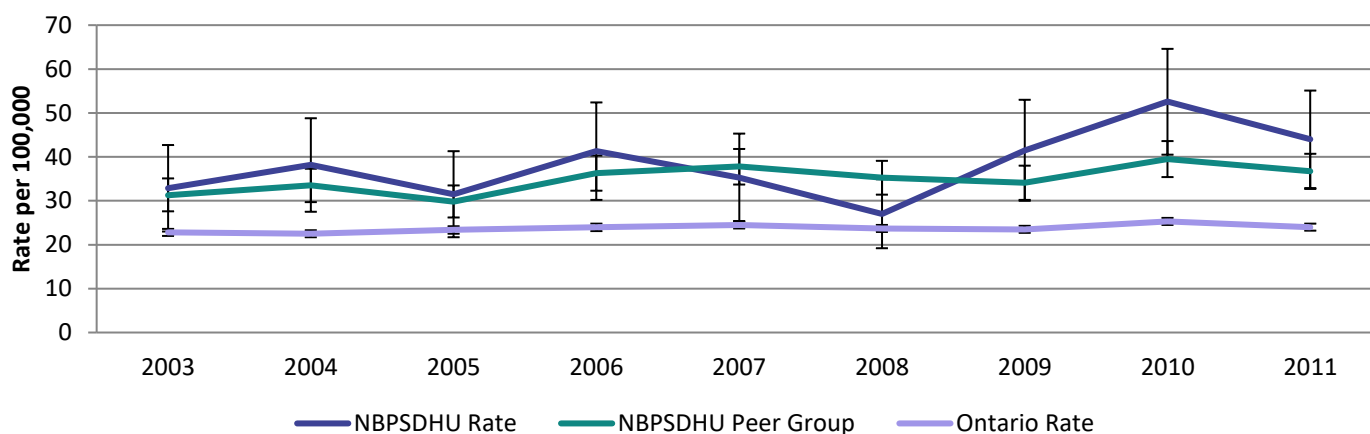


Table 2. Age-standardized rate (per 100,000 population) of unintentional injury-related mortalities for NBPSDHU, Sparsely Populated Urban-Rural Mix Peer Group, and Ontario, 2003-2011.

Year	NBPSDHU	NBPSDHU Peer Group	Ontario
2003	32.9	31.3	22.8
2004	38.2	33.5	22.5
2005	31.5	29.8	23.4
2006	41.3	36.3	24.0
2007	35.3	37.8	24.5
2008	27.0	35.3	23.7
2009	41.5	34.1	23.5
2010	52.6	39.5	25.3
2011	44.0	36.7	24.0

INJURY-RELATED MORTALITY

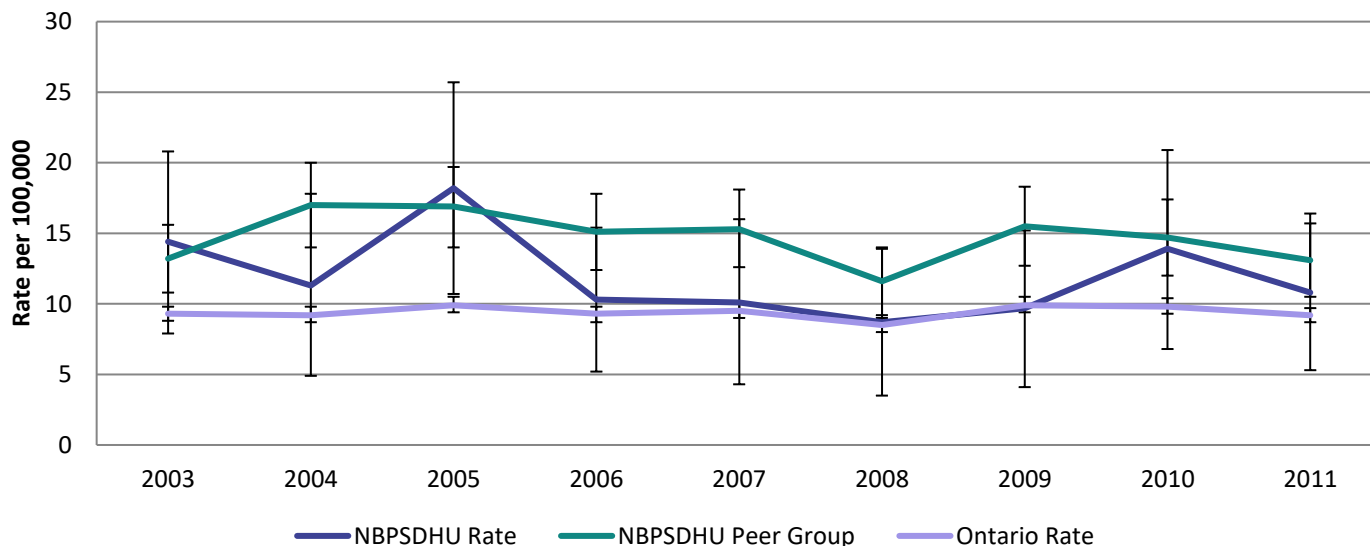
Table 3. Age-standardized rate (per 100,000 population) of unintentional injury-related mortalities by type of injury for NBPSDHU, Sparsely Populated Urban-Rural Mix Peer Group, and Ontario, 2011.

Type of injury	NBPSDHU	NBPSDHU Peer Group	Ontario
Falls	16.4	11.6	10.5
Land transport collisions	10.3	8.4	4.4
Motor vehicle collisions	10.3	8.0	4.2
Drowning or submersion	4.1	1.4	0.8
Suffocation	0.5	0.8	1.0
Unintentional poisoning	9.3	9.7	4.9

Intentional Injuries

The age standardized rate of intentional injury-related mortalities in the NBPSDHU region did not differ from the rate in Ontario nor the sparsely populated urban-rural mix peer group in 2003 to 2011 (Figure 3; Table 4). The rate of intentional injury-related mortalities in the NBPSDHU region, the peer group, and Ontario did not change significantly from 2003 to 2011. In 2011 there was a significantly higher rate of mortality due to intentional self-harm than assault in the NBPSDHU region, the peer group, and Ontario (Table 5). Rates did not significantly differ between the regions examined.

Figure 3. Age-standardized rate (per 100,000 population) of intentional injury-related mortalities for NBPSDHU, Sparsely Populated Urban-Rural Mix Peer Group, and Ontario, 2003-2011.



INJURY-RELATED MORTALITY

Table 4. Age-standardized rate (per 100,000 population) of intentional injury-related mortalities for NBPSDHU, Sparsely Populated Urban-Rural Mix Peer Group, and Ontario, 2003-2011.

Year	NBPSDHU	NBPSDHU Peer Group	Ontario
2003	14.4	13.2	9.3
2004	11.3	17.0	9.2
2005	18.2	16.9	9.9
2006	10.3	15.1	9.3
2007	10.1	15.3	9.5
2008	8.7	11.6	8.5
2009	9.7	15.5	9.9
2010	13.9	14.7	9.8
2011	10.8	13.1	9.2

Table 5. Age-standardized rate (per 100,000 population) of intentional injury-related mortalities by type of injury for NBPSDHU, Sparsely Populated Urban-Rural Mix Peer Group, and Ontario, 2011.

Type of injury	NBPSDHU	NBPSDHU Peer Group	Ontario
Assault	0.0	1.5	1.1
Intentional self-harm	12.6	13.5	9.4