

INJURY-RELATED HOSPITALIZATIONS

Data sources:

Public Health Ontario. Snapshots: North Bay Parry Sound District Health Unit, Sparsely Populated Urban-Rural Mix Peer Group, Ontario: Hospitalizations for All Injuries- age standardized rate (both sexes combined) 2003-2013. Toronto, ON:

Ontario Agency for Health Protection and Promotion; 2014 Nov 5 [cited 2015 Mar 12].

Available from:

<http://www.publichealthontario.ca/en/DataAnalytics/Snapshots/Pages/Injury-ED-Visits.aspx>

Interpretation of a significant difference:

A statistic interpreted as 'significantly different' from another is an estimate found to be statistically meaningful, in such a way that the difference between two estimates is unlikely due to chance and represents a real difference. Error bars noted in figures within this report illustrate 95% confidence intervals. If there is no overlap in range, the difference can be described as statistically significant.

Hospitalization:

A hospitalization occurs when a patient is admitted as an inpatient after being seen in the emergency department for an unscheduled visit.

All Injuries

In the North Bay Parry Sound District Health Unit (NBPSDHU) region, there was an average of 1167 (range: 1067-1292) injury-related hospitalizations per year between 2003 and 2013. The age-standardized rate of all injury-related hospitalizations in NBPSDHU was significantly lower in 2013 as compared to 2003. The age-standardized rate of injury-related hospitalizations in NBPSDHU was significantly higher than Ontario in 2003-2013, but did not differ significantly from the sparsely populated urban-rural peer group (Figure 1, Table 1).

Figure 1. Age-standardized rate (per 100,000 population) of all injury-related hospitalizations for NBPSDHU, Sparsely Populated Urban-Rural Mix Peer Group, and Ontario, 2003-2013.

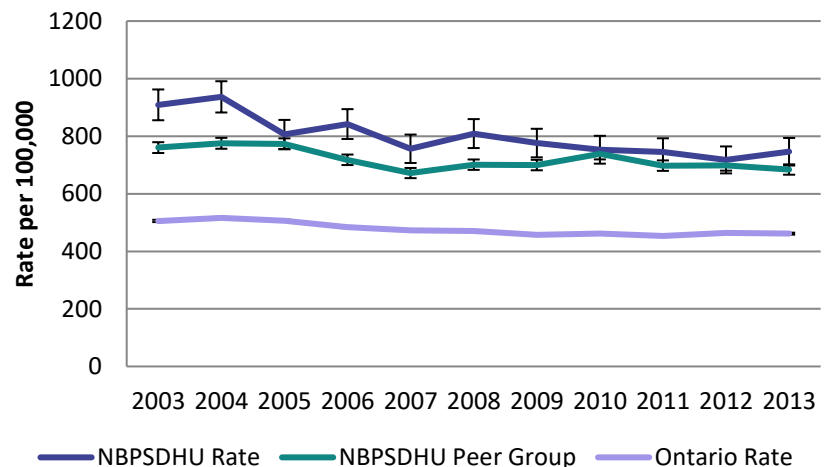


Table 1. Age-standardized rate (per 100,000 population) of all injury-related hospitalizations for NBPSDHU, Sparsely Populated Urban-Rural Mix Peer Group, and Ontario, 2003-2013.

Year	NBPSDHU	NBPSDHU Peer Group	Ontario
2003	908.9	760.4	505.6
2004	936.7	775.4	516.1
2005	806.2	773.5	506.6
2006	842.2	718.0	484.4
2007	756.3	672.0	472.4
2008	809.1	701.0	470.7
2009	776.1	699.7	457.1
2010	753.0	738.1	462.2
2011	745.2	697.7	453.4
2012	717.6	698.6	463.7
2013	745.9	684.2	461.4

INJURY-RELATED HOSPITALIZATIONS

Unintentional Injuries

The age-standardized rate of unintentional injury-related hospitalizations in the NBPSDU region was significantly higher than the rates for Ontario from 2003 to 2013, but similar to the rates of the sparsely populated urban-rural mix peer group in 2003-2013 (Figure 2; Table 2). The rate of unintentional injury-related hospitalizations in the NBPSDHU region was significantly lower in 2013 as compared to 2003, as was the rates in Ontario and the NBPDHU peer group.

The highest rate of unintentional injury-related hospitalizations in the NBPSDHU region in 2013 were due to falls, all land transport collisions, motor vehicle collisions and being struck by or against (Table 3). Rate of hospitalization was higher in the NBPSDHU region compared to Ontario in 2013 for bite by dog or other mammal, cut or pierced, exposure to smoke or fire or contact with heat or hot substances, falls, all land transport collisions and motor vehicle collisions (Table 3). As compared to the peer group, the rate of hospitalization for falls was significantly higher in the NBPSDHU region in 2013, with the rate of hospitalization significantly lower in the NBPSDHU region for unintentional poisoning in 2013 (Table 3).

Figure 2. Age-standardized rate (per 100,000 population) of unintentional injury-related hospitalizations for NBPSDHU, Sparsely Populated Urban-Rural Mix Peer Group, and Ontario, 2003-2013.

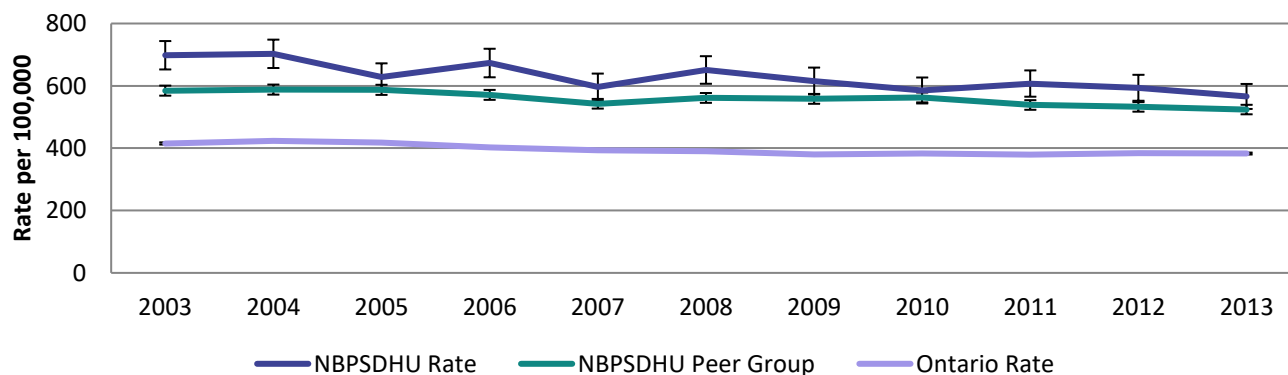


Table 2. Age-standardized rate (per 100,000 population) of unintentional injury-related hospitalizations for NBPSDHU, Sparsely Populated Urban-Rural Mix Peer Group, and Ontario, 2003-2013.

Year	NBPSDHU	NBPSDHU Peer Group	Ontario
2003	698.1	584.7	415.1
2004	702.7	588.0	423.5
2005	628.4	587.2	418.2
2006	673.2	571.0	402.1
2007	596.2	542.6	393.1
2008	650.9	561.3	390.3
2009	615.5	558.2	379.5
2010	585.1	562.7	383.2
2011	607.3	538.7	379.4
2012	593.8	532.5	383.9
2013	566.0	523.9	382.9

INJURY-RELATED HOSPITALIZATIONS

Table 3. Age-standardized rate (per 100,000 population) of unintentional injury-related hospitalizations by type of injury for NBPSDHU, Sparsely Populated Urban-Rural Mix Peer Group, and Ontario, 2013.

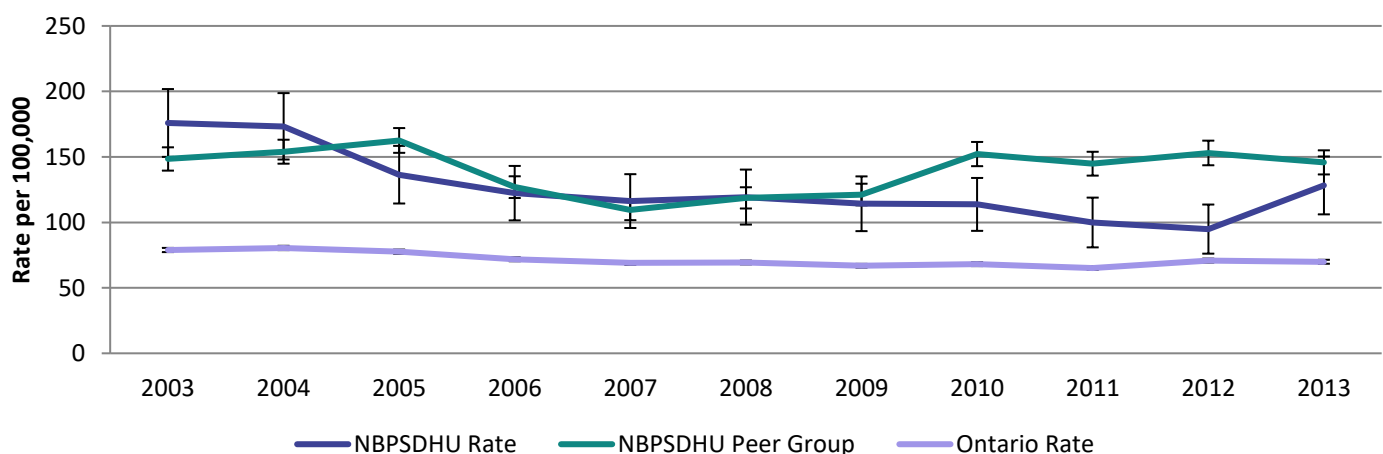
Type of injury	NBPSDHU	NBPSDHU Peer Group	Ontario
Bite by dog or other mammal	8.8	4.0	2.9
Caught or crushed between objects	1.8	4.7	2.7
Cut or pierced by an object	15.6	12.6	8.2
Struck by or against an object	26.8	23.7	20.2
Exposure to smoke or fire or contact with heat or hot substances	14.7	7.3	4.7
Falls	321.0	277.6	219.3
Foreign body in an eye or orifice	8.6	11.3	10.5
All land transport collisions	87.2	86.7	54.8
Motor vehicle collisions	75.5	77.5	45.5
Near-drowning or submersion	0.0	0.7	0.7
Overexertion	8.6	10.5	7.9
Suffocation	4.4	3.1	1.6
Unintentional poisoning	20.0	35.9	17.1

Intentional Injuries

The age standardized rate of intentional injury-related hospitalizations in the NBPSDHU region was consistently higher than the rate in Ontario, but similar to the rate for the sparsely populated urban-rural mix peer group in 2003 to 2013 (Figure 4; Table 4). The rate in 2013 in the NBPSDHU region was not significantly different from the rate in 2003.

In 2013, the hospitalization rate in the NBPSDHU region for intentional self-harm was significantly higher than that for assault. When compared to Ontario, hospitalization rates for both assault and intentional self-harm were significantly higher in the NBPSDHU region and the peer group. There was no significant differences for hospitalization rates for NBPSDHU region and the peer group (Table 5).

Figure 3. Age-standardized rate (per 100,000 population) of intentional injury-related hospitalizations for NBPSDHU, Sparsely Populated Urban-Rural Mix Peer Group, and Ontario, 2003-2013.



INJURY-RELATED HOSPITALIZATIONS

Table 4. Age-standardized rate (per 100,000 population) of intentional injury-related hospitalizations for NBPSDHU, Sparsely Populated Urban-Rural Mix Peer Group, and Ontario, 2003-2013.

Year	NBPSDHU	NBPSDHU Peer Group	Ontario
2003	175.9	148.4	78.9
2004	173.3	153.9	80.4
2005	136.4	162.5	77.6
2006	122.3	126.9	71.8
2007	116.2	109.5	69.0
2008	119.3	118.7	69.3
2009	114.2	121.2	66.8
2010	113.7	152.1	68.1
2011	99.9	144.8	65.1
2012	94.8	153.0	70.8
2013	128.2	145.8	69.9

Table 5. Age-standardized rate (per 100,000 population) of intentional injury-related hospitalizations by reason for visit for NBPSDHU, Sparsely Populated Urban-Rural Mix Peer Group, and Ontario, 2013.

Type of injury	NBPSDHU	NBPSDHU Peer Group	Ontario
Assault	29.9	29.9	14.3
Intentional self-harm	114.2	134.7	64.7